



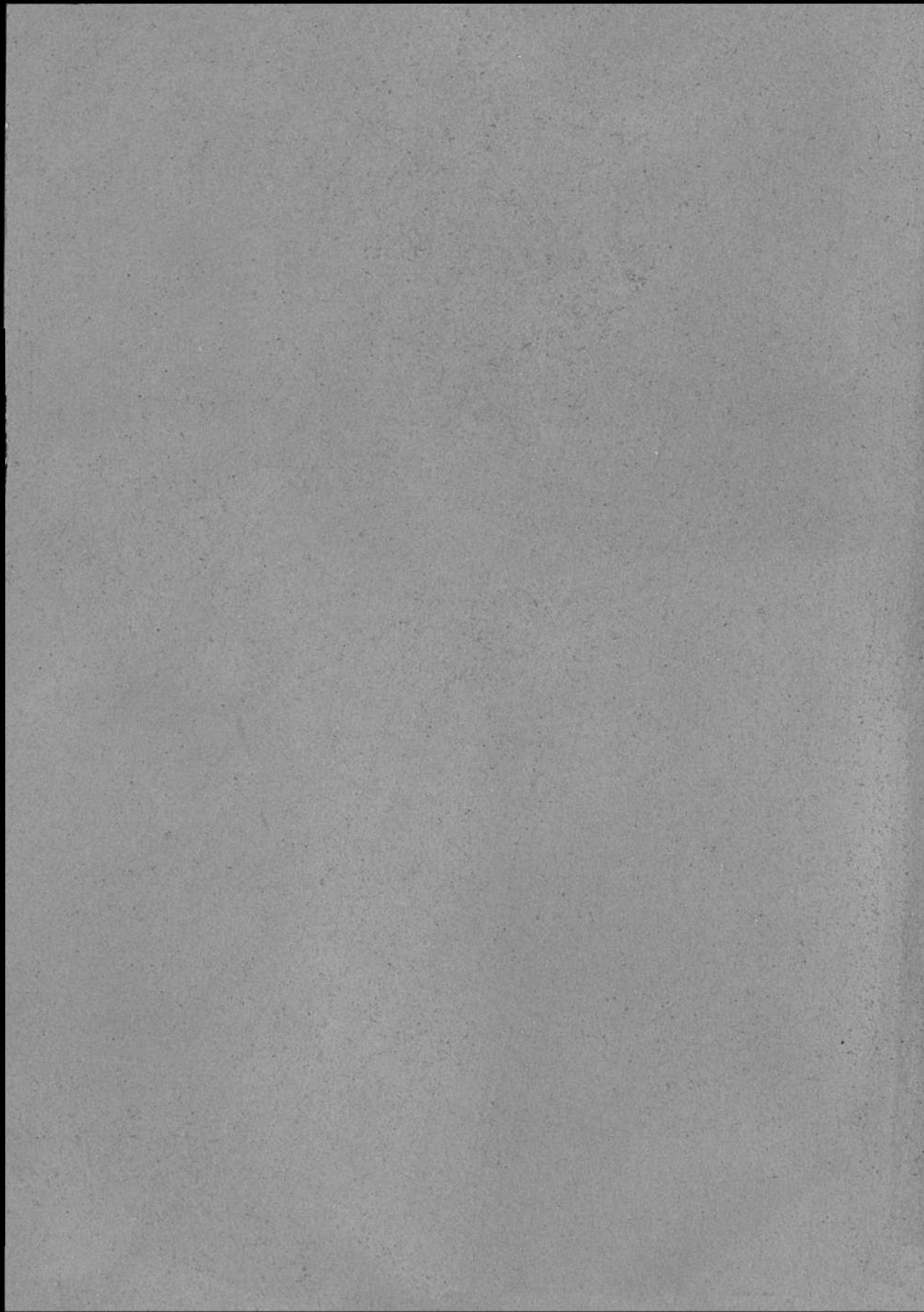
ELEKTA®



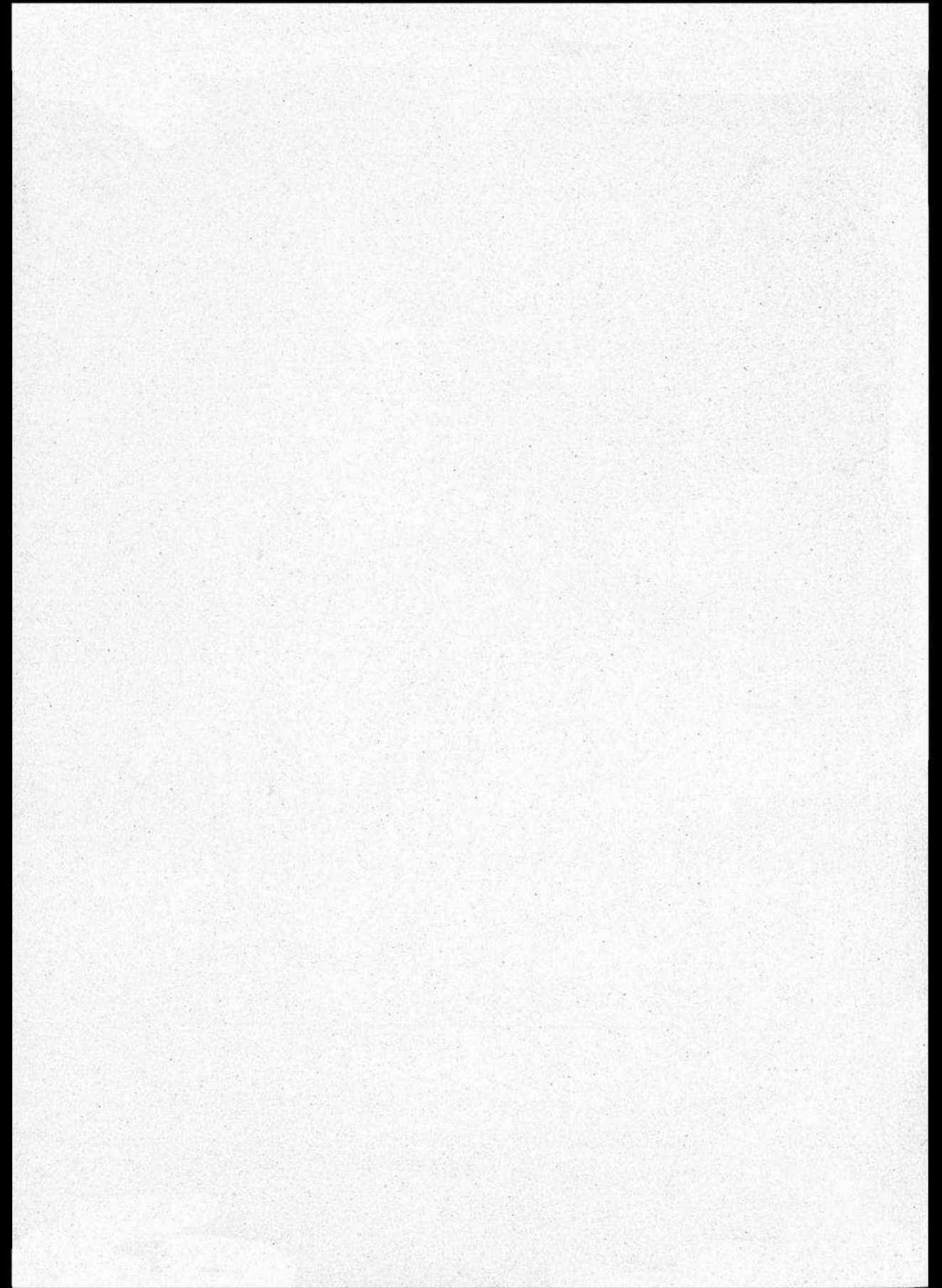
Pastellone 2.0®

RIVESTIMENTO MINERALE E TERRE NATURALI
PER PAVIMENTI PARETI E ARREDO

COLLEZIONE 2



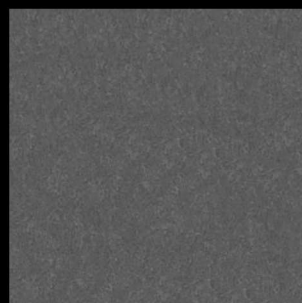
Pastellone 2.0® BASE GRIGIA cod. GR 00



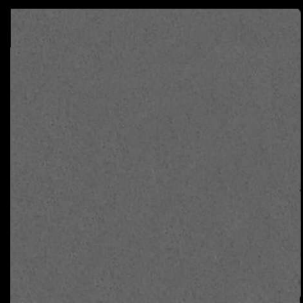
Pastellone 2.0® BASE BIANCA cod. BC 00



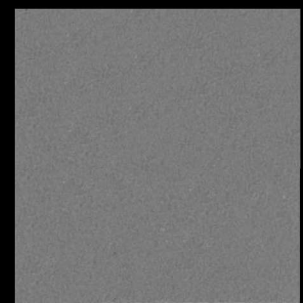
Cod. **BC 14.14**



Cod. **GR 14**



Cod. **BC 14**



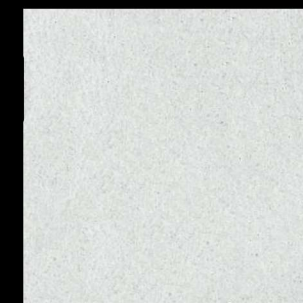
Cod. **GR 12**



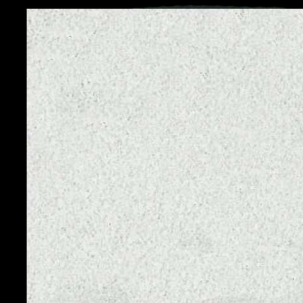
Cod. **GR 31.31**



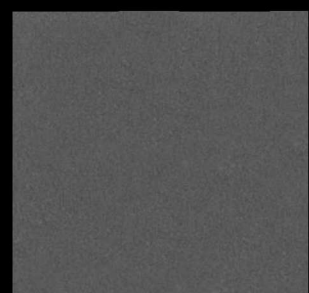
Cod. **GR 31**



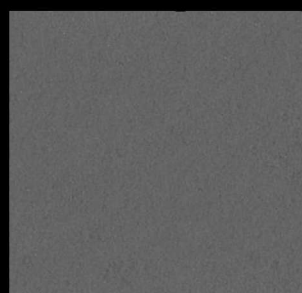
Cod. **BC 81.81**



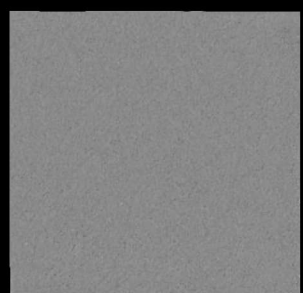
Cod. **BC 81**



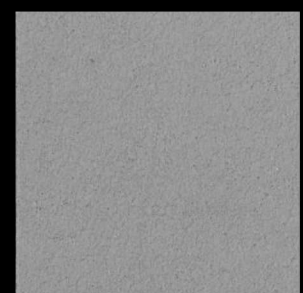
Cod. **GR 14.73**



Cod. **GR 95.95**



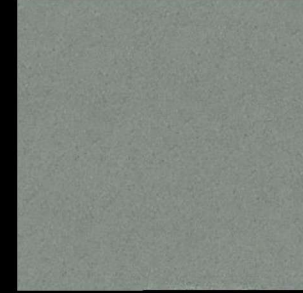
Cod. **BC 95**



Cod. **BC 12**



Cod. **GR 73.73**



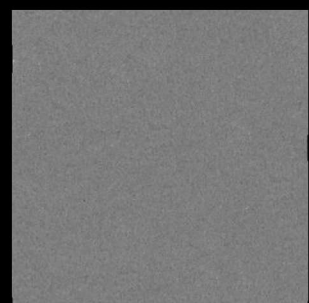
Cod. **GR 73**



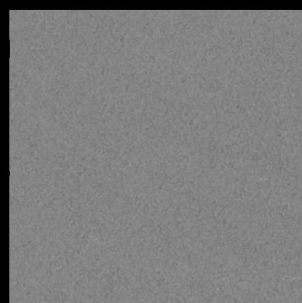
Cod. **BC 73.73**



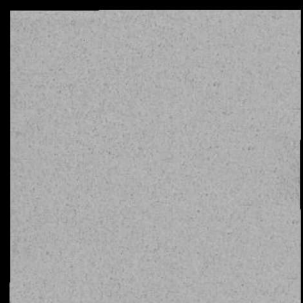
Cod. **BC 73**



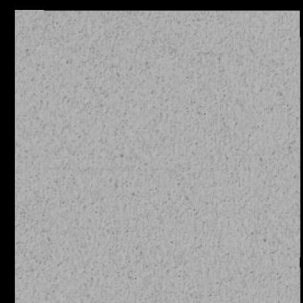
Cod. **GR 17**



Cod. **GR 11**



Cod. **BC 11**



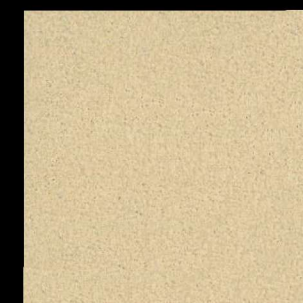
Cod. **BC 17**



Cod. **BC 53.53**



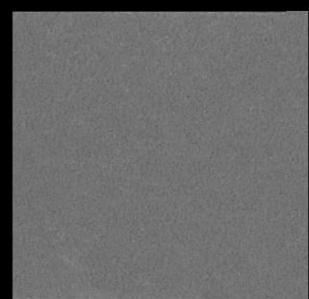
Cod. **BC 61.61**



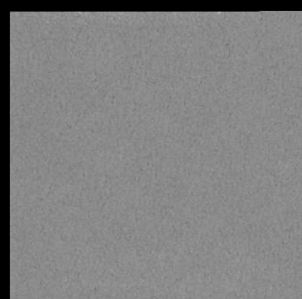
Cod. **BC 61**



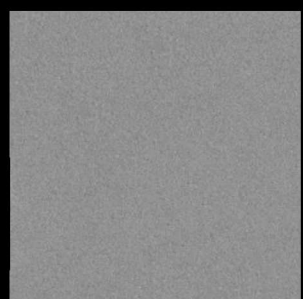
Cod. **BC 53**



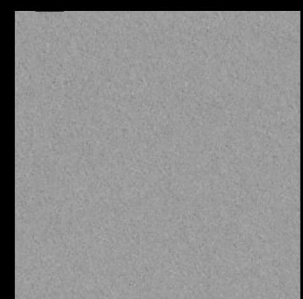
Cod. **GR 95**



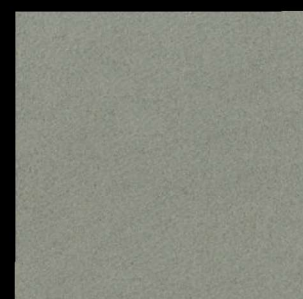
Cod. **GR 18**



Cod. **GR 81**



Cod. **GR 54**



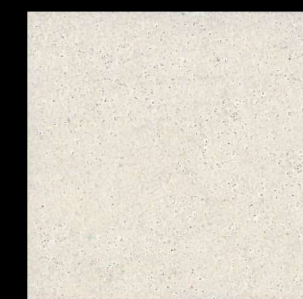
Cod. **GR 61**



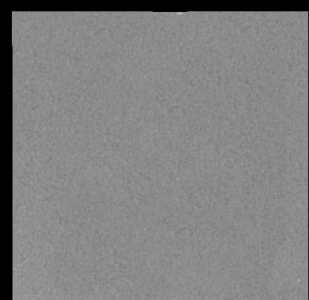
Cod. **BC 11.61**



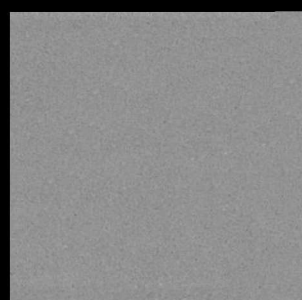
Cod. **BC 43**



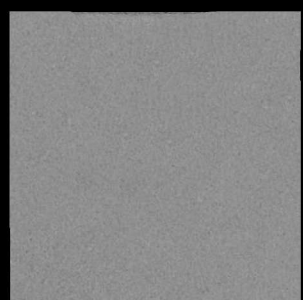
Cod. **BC 54.54**



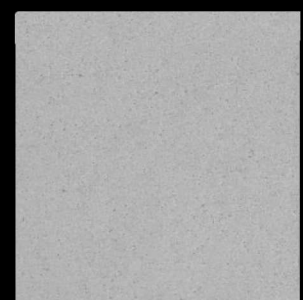
Cod. **GR 43**



Cod. **GR 76**



Cod. **GR 16**



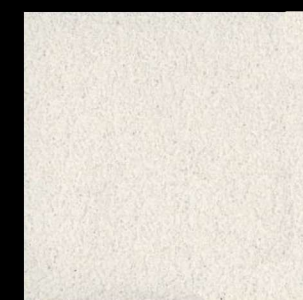
Cod. **BC 18**



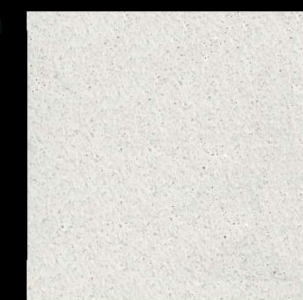
Cod. **BC 16**



Cod. **BC 16.54**



Cod. **BC 54**



Cod. **BC 54.81**

Pastellone 2.0®

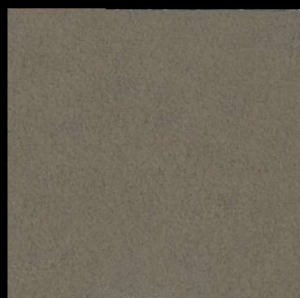
MINERALI E TERRE NATURALI

Pastellone 2.0® è disponibile in 2 Basi: BASE GRIGIA GR 00 e BASE BIANCA BC 00

Pastellone 2.0 is available in two different basis: GREY (GR 00) and WHITE (BC 00)



Cod. **BC 14.21**



Cod. **GR 51.73**



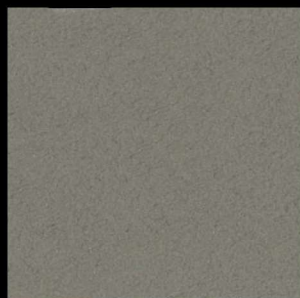
Cod. **GR 51**



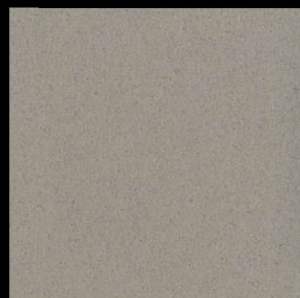
Cod. **BC 22.22**



Cod. **GR 63**



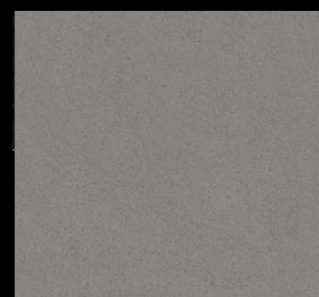
Cod. **GR 22**



Cod. **BC 11.22**



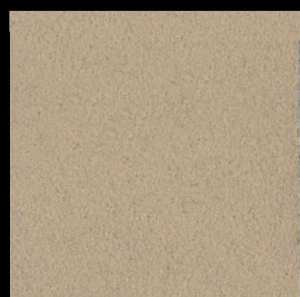
Cod. **BC 43.43**



Cod. **BC 12.63**



Cod. **BC 94.94**



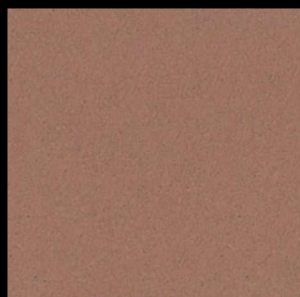
Cod. **BC 22**



Cod. **BC 94**



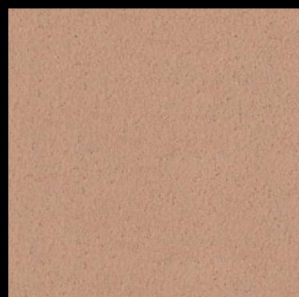
Cod. **GR 21**



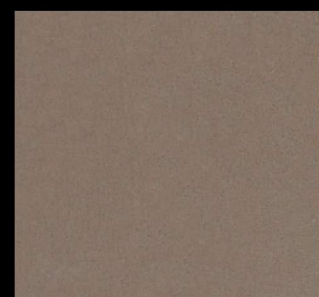
Cod. **BC 21.73**



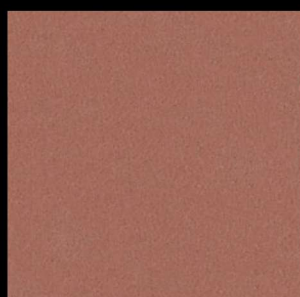
Cod. **BC 51**



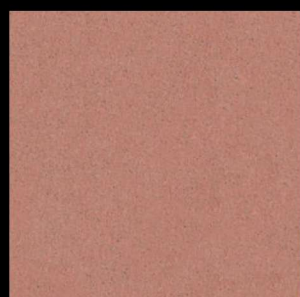
Cod. **BC 63.63**



Cod. **GR 21.73**



Cod. **BC 21.21**



Cod. **BC 21.54**

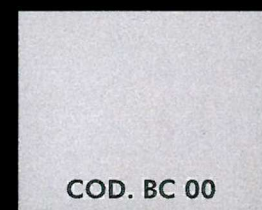


Cod. **BC 63**



COD. GR 00

BASE GRIGIA



COD. BC 00

BASE BIANCA

PREPARAZIONE DEL PRODOTTO : Per utilizzare Pastellone 2.0® nelle sue 2 colorazioni base, è sufficiente aggiungere alla polvere il 35% di acqua. Miscelare accuratamente con miscelatore meccanico e applicare a spatola 2 mani di prodotto. (Vedi scheda tecnica pastellone 211.18)

HOW TO APPLY: To use Pastellone 2.0 in the two basic colours, add to the powder a 35% of water. Mix with electric mixer and apply in 2 coats (see technical sheet number 211.18)

LE TERRE

The earths



20 gr 100 gr 300 gr

Pastellone 2.0®, in base bianca (BC 00) o in base grigia (GR 00), può essere colorato aggiungendo Le Terre Naturali di Eleka. Le Terre Naturali sono disponibili in **20 colorazioni** diverse. Possono essere utilizzate singolarmente o miscelate tra loro a proprio piacimento.

Per ottenere i colori della cartella e leggere in modo corretto il codice:

esempio di codice: **Cod. BC 21.73**

cod. **BC** (indica la base BIANCA) cod. **GR** (indica la base GRIGIA) **il numero** (indica il colore della terra es. n. 21)
il codice colore della terra sarà da utilizzare con il seguente rapporto:

Pastellone® 15 Kg ► terra 300 gr

Pastellone® 5 Kg ► terra 100 gr

Pastellone® 1Kg ► terra 20 gr

Se ci sono 2 numeri accostati (uguali o diversi) il quantitativo di terra sarà doppio.

NATURAL EARTHS: Pastellone 2.0® in white base (BC 00) or in gray base (GR 00) could be colored adding Natural Earths of Eleka.

Natural Earths are available in 20 different colours and they could be used alone or mixed, as you like.

To obtain the colours of this catalogue, you have to follow the code you can read:

Example: BC 21.73

cod. **BC** means you should use the white base, **GR** means you should use the gray base **the number** (for example 21) is the colour of the earth you have to use. If you have 1 number you have to use just 1 earth, if you have 2 numbers you have to use 2 earths (same or different colour), and this means double quantity.

Proportion when you have to use just one earth:

Pastellone® 15 Kg ► terra 300 gr

Pastellone® 5 Kg ► terra 100 gr

Pastellone® 1 Kg ► terra 20 gr



COD. GR 00

Finitura/Finishing:
Trasparente opaco



COD. GR 00

Finitura/Finishing:
Trasparente satinato



COD. COD. GR 00

Finitura/Finishing:
Trasparente lucido

Superfici naturali dal sapore antico, per la casa del futuro *The old-fashioned flooring surface, for the house of the future.*

Pastellone 2.0® è un rivestimento in polvere a base di sabbie alluvionali, minerali e terre naturali, caratterizzato da colori palpabili e texture morbide e delicate, unite a leggeri rilievi arrotondati. Pastellone 2.0® si unisce a 20 differenti Terre Naturali che ne determinano le 62 tonalità e che sono state classificate in Terre d'India, Terre di Cipro, Terre di Turchia, Terre di Francia, Terre di Spagna, Terre del Marocco, Terre d'Italia e Terre del Nord. In soli 2 mm di spessore, racchiude il cuore della tecnologia e della ricerca, mantenendo l'effetto minimale grazie alla sua naturale formulazione.

Rapida nella posa e inodore, è ideale su superfici nuove e per ristrutturazioni, direttamente applicabile a qualsiasi rivestimento interno ed esterno, previa adeguata preparazione del supporto. La finitura Pastellone 2.0® può essere protetta con lo speciale Olio Eko, in linea con la Bioedilizia e certificato A+ (zero emissioni VOC) oppure con trasparente all'acqua Topskin, lucido, satinato, opaco.

Lo strato di colore naturale è resistente alla luce, al graffio, all'incisione, ai colpi e agli urti. Le caratteristiche principali della collezione Pastellone 2.0® sono: l'innovazione e il made in Italy, l'impatto ecologico (completamente all'acqua), gli spessori ridotti, la tenuta, la resistenza, l'elasticità e il valore aggiunto estetico.

Pastellone 2.0® is a natural materials, colored with ground earths, protected with the natural Eko Oil. This collection includes colors, exclusively originated from natural earth. These earths are not modified, rather taken in the pure state, from open-air mines or caverns. The collection embodies in itself and describes the world of these natural earths. The line is characterized by very palpable colors, and soft yet delicate textures, and, at the same time, by light, rounded reliefs that spread out. To date, there are 20 colors derived from the earths (following other colors). Colors which decorate the spaces, evoking past atmospheres, blending with the other elements: stones, wood, lacquered or white surfaces.

This first collection features clear-cut, discrete colors, and a timeless design. At a first glance, they may seem quite 'tactile', slightly granulose, although they feature rounded textures, and rigorously selected colors from European or not European suppliers, depending on the original, natural color (as stated before, the natural earths come from Cyprus, India, Italy, Turkey, Spain, France, Morocco). The varied nuances define the color palette of the collection.

The 2 mm thick Pastellone 2.0 is a blend of technology and research, while maintaining a very minimalist look. This is due to its natural composition, obtained by mixing sands, alluvial deposits, minerals, binding powders colored with finely ground natural earths, washed and mixed together.



GRUPPO GA.NI. Srl

Via Vivaldi, 4 - 22071 Cadorago (Co) Italy

Tel. +39 031.90.51.63

eMail: gruppogani@gruppogani.com www.elektaresine.it

I colori possono presentare leggere differenze rispetto al catalogo e l'applicazione può avere delle diversità tipiche della lavorazione artigianale. Tali imperfezioni sono da ritenersi un pregio e non un difetto.

Colors may have soft differences respect to the catalog and the application may have a diversity of craftsmanship. These imperfections have to be considered as a value and not a defect.